

Pressure Transmitter 4-20mA 2-wire MPG
for level measurement

Type: **MPGxxxxxxxx**
Order No.: see Table 1 / Page 4

Features

- Two wire system
- Piezoresistive measuring element
- Pressure measurement relative or absolute
- Output signal 4-20 mA, adjustable within 1 : 4 of the original measuring range
- Conformity error $\leq \pm 0.1\%$ FS
- Standard DIN measuring ranges from 0 ... 100 mbar up to 0 ... 160 bar or selection of measuring ranges in mWC or psi
- Temperature compensation within -10°C ... +50°C [+14°F ... +122°F] or -25°C ... +85°C [-13°F ... +185°F]
- Optional overvoltage (lightning) protection according to EN 61000-4-5
- Compact and robust

Picture



Specifications


All specifications, unless otherwise noted, at DC 24 V supply voltage, $R_L = 100 \Omega$, $T_{amb} = 25^\circ C$ [77°F].

Measurement Range Independent Technical Data

Type	Two wire current transmitter
Output signal	4 ... 20 mA
Resolution	12 bit (< 0.025 % FS)
Interface for adjustment	HART-like
Output 0% adjustability	-5% of orig. FS ... +105% of orig. FS (rel. measurement) 0% of orig. FS ... +105% of orig. FS (abs. measurement)
Output 100% adjustability	-5% of original FS ... +105% of original FS
Difference (0% - 100%) adjustability	$\geq 25\%$ of original FS and ≥ 50 mbar [0.725 psi]
Damping adjustability	~ 30 ms (default), 100 ms, 1 s, 10 s = 30 Hz (default), 10 Hz, 1 Hz, 0.1 Hz cut-off frequency
Supply voltage	DC 9 ... 33 V
Reverse polarity protection	integrated, standard
Overvoltage (lightning) protection	optional
Supply voltage influence	< 0.1 % FS
Dielectric strength case / supply	500 V
Load resistance limitation	$R_L [\Omega] \leq (+U_B [V] - 9 [V]) / 0.02 [A]$
Load resistance influence	< 0.1 % FS
Protection class	IP65 (~NEMA6)
Medium temperature range	0°C ... +80°C [+32°F ... +176°F] standard -25°C ... +100°C [-13°F ... +212°F] option
Temperature Compensation range	-10°C ... +50°C [+14°F ... +122°F] standard -25°C ... +85°C [-13°F ... +185°F] option
Storage temperature range	see medium temperature range

Acid resistance	pH5 ... pH9
Weight	approx. 160 g [0.35 lb.] without surge protection approx. 170 g [0.37 lb.] with surge protection
Measuring cell, diaphragm, housing	Stainless steel 1.4435 (316L)
Seals	Viton
Pressure connection	by choice G 1/2 A or 1/2 NPT A
Electrical connection	by choice Connector DIN 43650 (IP65 ~NEMA4) or Binder 723, (IP67 ~NEMA6), 5-pin
Electromagnetic Compatibility	
Emission	
Generic emission standard	EN 61000-6-3
Emission, class B	EN 55022
Immunity	
Generic immunity standard	EN 61000-6-2
Electrostatic discharge	EN 61000-4-2 (4 kV contact, 8 kV air)
Radiated electro-magnetic field	EN 61000-4-3 (10 V/m, 80 ... 1000 MHz, 80% AM 1 kHz)
Radiated electro-magnetic field (GSM)	EN 61000-4-3 (10 V/m, 950 MHz, 200 Hz on/off)
Fast transients (burst)	EN 61000-4-4 (2 kV)
Conducted radio-frequency	EN 61000-4-6 (10 V, 0.15 ... 80 MHz, 80% AM 1 kHz)
Surge	EN 61000-4-5 (10 kA 8/20µs) [only with the option overvoltage (lightning) protection]

Quality Tests

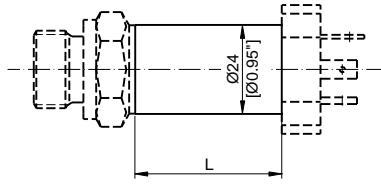
 The transmitters fulfil the requirements for noise immunity and emissions of the EMC directive 89/336/EEC.

Measurement Range Specific Technical Data

Pressure ranges	< 0.2 bar [2.9 psi]	≥ 0.2 ... 1 bar [2.9...14.5 psi]	≥ 1 ... 160 bar [14.5...362.6 psi]
Overload	3 bar [43.5 psi]	3 bar [43.5 psi]	3 x FS
Bursting pressure	≥ 200 bar [2900 psi]	≥ 200 bar [2900 psi]	≥ 200 bar (≤ 25 bar FS) [2900 psi (≤ 363 psi FS)] ≥ 850 bar (> 25 bar FS) [12328 psi (> 363 psi FS)]
Conformity error incl. hysteresis and repeatability			
-10°C ... +50°C [+14°F...+122°F]	≤ ±0.2 % FS	≤ ±0.1 % FS	≤ ±0.1 % FS
-25°C ... +85°C [-13°F...+185°F]	≤ ±0.2 % FS	≤ ±0.1 % FS	≤ ±0.1 % FS
Temperature error zero / span			
-10°C ... +50°C typ.	≤ ±100 ppm FS/°C	≤ ±60 ppm FS/°C	≤ ±60 ppm FS/°C
[+14°F...+122°F] max.	≤ ±150 ppm FS/°C	≤ ±100 ppm FS/°C	≤ ±100 ppm FS/°C
-25°C ... +85°C typ.	≤ ±200 ppm FS/°C	≤ ±150 ppm FS/°C	≤ ±150 ppm FS/°C
[-13°F...+185°F] max.	≤ ±250 ppm FS/°C	≤ ±200 ppm FS/°C	≤ ±200 ppm FS/°C
Long term drift typ.	≤ 0.2 % FS/a	≤ 0.2 % FS/a	≤ 0.1 % FS/a

	Data Sheet Hardware	DG DKap Stamm-Bez. Var Ind F Sp
		21.210.1560204.001.06.4.4

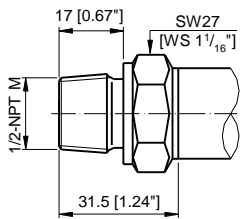
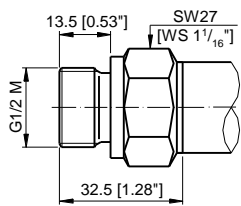
Dimensions [mm]



L = 74 mm [2.91"] with / without overvoltage protection

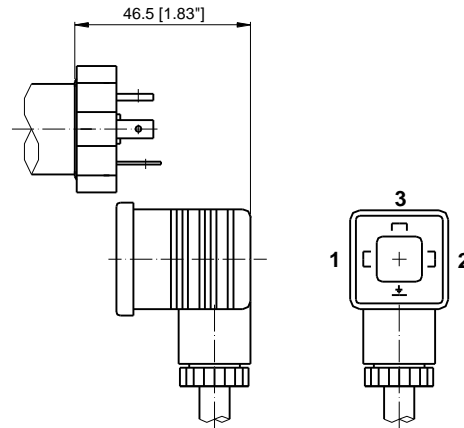
Pressure connectors:

Standard

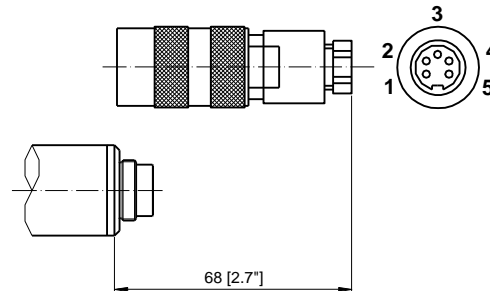


Electrical connectors:

DIN 43650 connector, standard



Binder 723, 5-pin connector



Ordering Information

Table 1: The exact order number for an article is formed from the individual options codes according to the table (with the BAAN-Configurator PCF or manually).

MPG	PCF Order Number																
	1/2	3	4	5	6	7	8	9	10	11	12	13	14	15	16		
Type																	
MPG	PG																
Pressure type																	
Gauge		1															
Absolut (vacuum)		2															
Sealed gauge		3															
Measurement range																	
0 ... 100 mbar = 0 ... 1.45 psi			0	0													
0 ... 160 mbar = 0 ... 2.32 psi			0	1													
0 ... 250 mbar = 0 ... 3.63 psi			0	2													
0 ... 400 mbar = 0 ... 5.8 psi			0	3													
0 ... 600 mbar = 0 ... 8.7 psi			0	4													
0 ... 1.0 bar = 0 ... 14.5 psi			0	5													
0 ... 1.6 bar = 0 ... 23.2 psi			0	6													
0 ... 2.5 bar = 0 ... 36.25 psi			0	7													
0 ... 4.0 bar = 0 ... 58 psi			0	8													
0 ... 6.0 bar = 0 ... 87 psi			0	9													
0 ... 10 bar = 0 ... 145 psi			1	0													
0 ... 16 bar = 0 ... 232 psi			1	1													
0 ... 25 bar = 0 ... 362.5 psi			1	2													
0 ... 40 bar = 0 ... 580.2 psi		3	1	3													
0 ... 60 bar = 0 ... 870.2 psi		3	1	4													
0 ... 100 bar = 0 ... 1450.4 psi		3	1	5													
0 ... 160 bar = 0 ... 2320.6 psi		3	1	6													
0 ... 1 mWC			6	0													
0 ... 2 mWC			6	1													
0 ... 5 mWC			6	2													
0 ... 10 mWC			6	3													
0 ... 20 mWC			6	4													
0 ... 50 mWC			6	5													
0 ... 1.5 psi			7	0													
0 ... 3.0 psi			7	1													
0 ... 7.5 psi			7	2													
0 ... 15 psi			7	3													
0 ... 30 psi			7	4													
0 ... 75 psi			7	5													
0 ... 150 psi			7	6													
0 ... 300 psi			7	7													
Special range			9	9													
Process connection																	
G1/2 M					1	3											
1/2 NPT M					1	9											
Electrical connection																	
Connector DIN 43650, IP65 *							0	1									
Connector Binder 723, IP67, 5-pin *							0	3									
Output signal																	
4 ... 20 mA without overvoltage (lightning) protection									0	5							
4 ... 20 mA with overvoltage (lightning) protection									0	8							
Accuracy																	
±0.2 % FS, only for FS < 200 mbar												4					
±0.1 % FS, only for FS ≥ 200 mbar												2					
Temperature range																	
Compensated -10°C ... +50°C (Medium 0 ... 80°C)													0				
Compensated -25°C ... +85°C (Medium -25°C ... +100°C)													1				
(Cable length)																	
always = 000															0	0	0

* The pressure transmitter always requires a plug-in cable coupling that has to be ordered separately.

Parameterisation

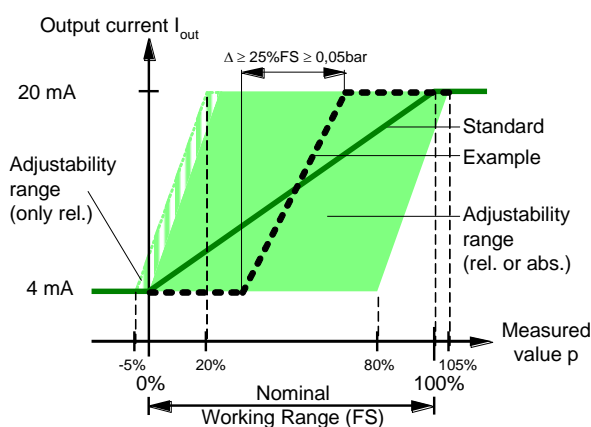
With the aid of the programming kit MPPKIT available as an accessory, the software of the pressure transmitter can be parameterised with a PC (see also Data Sheet 21.210.0066900.001 and Operating Instructions 21.810.0066900.001).

- Range selection for output current 4 ... 20 mA
 With the range selection 4 ... 20 mA, the 4 mA and 20 mA current values can be assigned to measured values other than the standard 0% and 100% of the nominal measuring range. (Typically with 4 mA a value from the range -5% ... +25% of the nominal measuring range, with 20 mA, a value from the range +25% ... +105% of the nominal measuring range.) In this way, a sub-range or even a negative pressure can be measured. The difference Δ between the minimum and maximum must amount to at least 25% of the nominal measuring range and be at least 50 mbar.

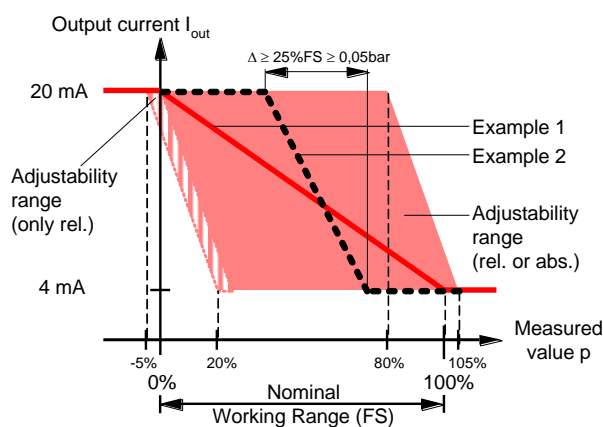
Inverted control can be achieved by exchanging the values for 4 mA and 20 mA.

The ranges of adjustability are presented graphically in the following illustrations:

Non-inverted Control:



Inverted Control:



- Programmable Damping of the Current Output
 The analog output can be damped with a low pass filter of the 1st order. The adjustability enables values between ~ 33 ms (default) and 10 s.

Note: During commissioning, damping is preferably left at the minimum value.

- Recalibrating the transmitter (calibration 0 % or 100 %) enables compensation of the drift which inevitably occurs with resistive pressure transducers. The zero drift alone or the combination of zero drift and slope change can be compensated. In doing so, the original calibration of the transmitter is not lost and can be recalled as necessary.

- Setting range 0%: -5% ... +5% of nominal measuring range (FS) with relative measuring probes
 0% ... +5% of nominal measuring range (FS) with absolute measuring probes
- Setting range 100%: 95% ... 105% of nominal measuring range (FS)

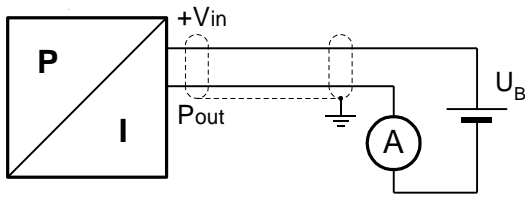
Standard Settings

The transducers have the following standard parameterisation:

- Current range: 4 ... 20mA
- Measurement start: 4 mA = 0% of nominal measurement range (FS)
- Measurement end: 20 mA = 100% of nominal measurement range (FS)
- Damping: ~ 30 ms

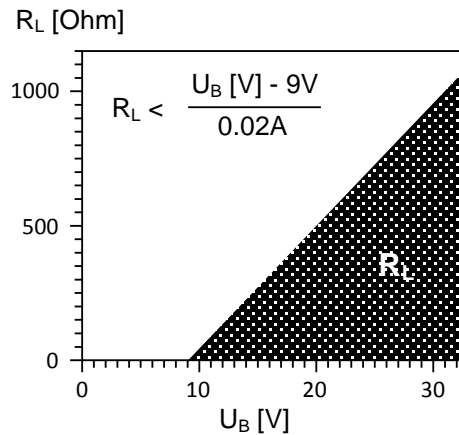
	Data Sheet Hardware	DG DKap Stamm-Bez. Var Ind F Sp
		21.210.1560204.001.06.4.4

Block Diagram / Electrical Connections



DIN 43650: +Vin = Pin 1
Pout = Pin 2

Binder 723: +Vin = Pin 3
Pout = Pin 1



Note

- The load resistance R_L is the sum of load and cable resistance.
- In order to prevent destruction, the membrane must not be touched.
- For applications in the field with extension cables having a cable length ≥ 5 m [16 ft.] or inside a building with cable lengths ≥ 100 m [330 ft.], a transmitter with the overvoltage protection option and an external overvoltage protection PT1x2-24DC-SET or a junction box NLAD.MPG (at other end of the cable) must be used.
- The cable shield must be connected to a good ground potential.
- In order to compensate the long term drift an annual zero point alignment is recommended.
- Conversion table for pressure units
(value in new unit) = coefficient x (value in old unit)

coefficient	new unit						
old unit	Pa = 1 N/m ²	bar	mWC	ftWC	mmHg (Torr)	psi	kp/cm ² = at
Pa = 1 N/m ²	1	10 ⁻⁵	1.02 x 10 ⁻⁴	3.35	7.5 x 10 ⁻³	1.45 x 10 ⁻⁴	1.02 x 10 ⁻⁵
bar	10 ⁵	1	10.2	33.5	750	14.5	1.02
mWC	9.81 x 10 ³	9.81 x 10 ⁻²	1	3.28	73.6	1.42	0.1
ftWC	2.99 x 10 ³	2.99 x 10 ⁻²	0.305	1	22.4	0.433	3.05 x 10 ⁻²
mmHg (Torr)	1.33 x 10 ²	1.33 x 10 ⁻³	1.36 x 10 ⁻²	4.46 x 10 ⁻²	1	1.93 x 10 ⁻²	1.36 x 10 ⁻³
psi	6.89 x 10 ³	6.89 x 10 ⁻²	0.703	2.31	51.7	1	7.03 x 10 ⁻²
kp/cm ² = at	9.81 x 10 ⁴	0.981	10	32.8	736	14.2	1

Application example 2 bar = ? psi:
bar = "old unit", psi = "new unit", \Rightarrow "coefficient" = 14.5
2 bar = 14.5 x 2 psi = 29 psi

Accessories

	Abbreviation	Order No.
Programming-Kit consisting of interface box and Windows programming software (XP / VISTA / W7)	MPPKIT	00 66 900.001
Cable connector without / with cable	see configurator accessories MPG / MPJ (PZ)	
Extension cable 2-wire, shielded (L in meter)	MPZVK	04 60 502
Junction box IP66 (~NEMA 6)	NLAD.KL8	00 65 190.100
Junction box IP66 (~NEMA 6), 1 OVP	NLAD.MPG	00 65 190.103
OVP complete for analogue signal	PT1x2-24DC-SET	22 50 215
Venting (PN 80) complete	MPZLU	00 66 181.001
Wall mounting set	MPZBMA	00 65 715.001

	Data Sheet Hardware	DG DKap Stamm-Bez. Var Ind F Sp
		21.210.1560204.001.06.4.4

Intentionally left blank

	Data Sheet Hardware	DG DKap Stamm-Bez. Var Ind F Sp 21.210.1560204.001.06.4.4
---	----------------------------	---